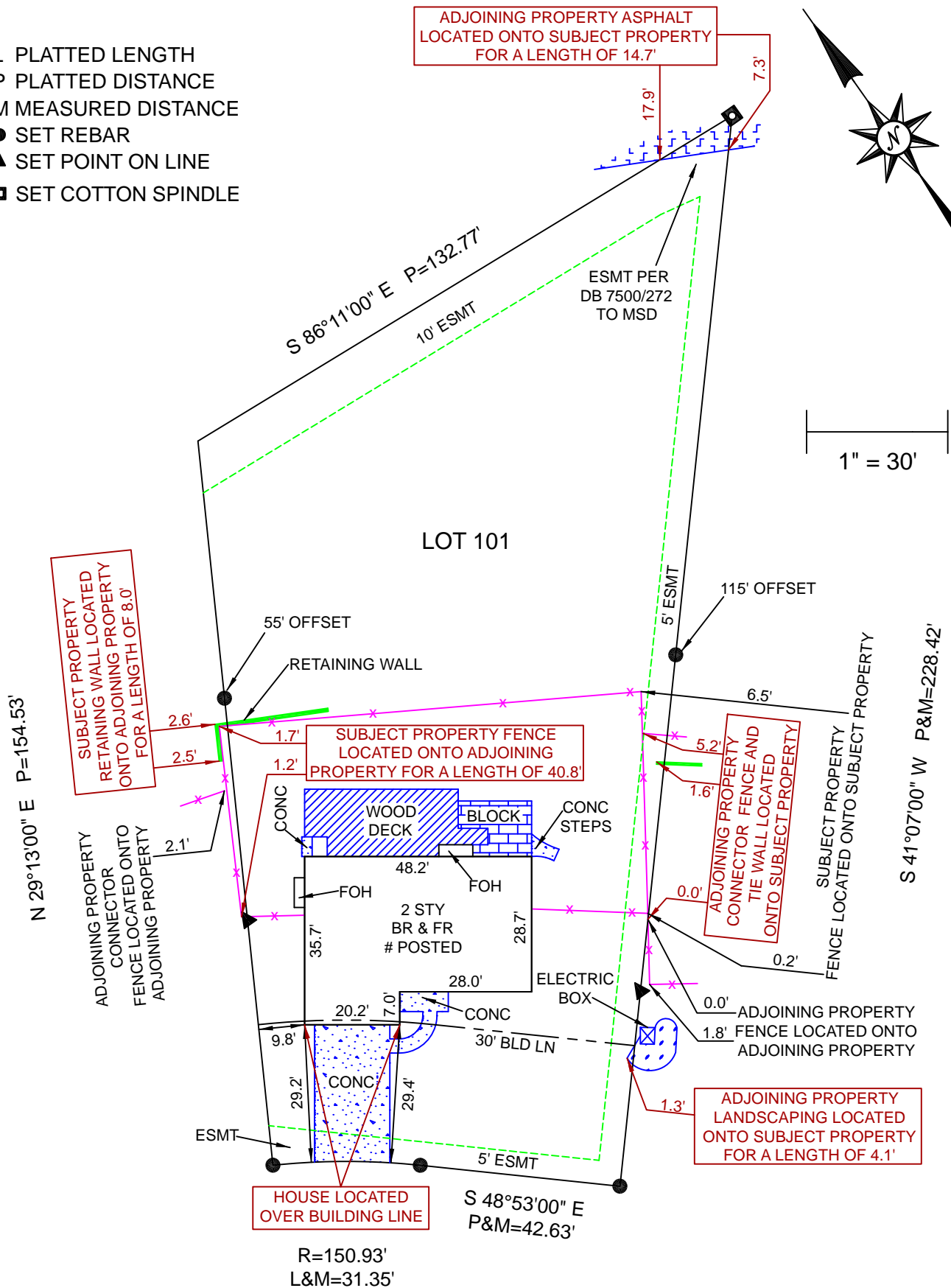


BOUNDARY SURVEY LOT 101 GRAND GLEN PB 123 PG 1234, ST LOUIS COUNTY, MO

- L PLATTED LENGTH
- P PLATTED DISTANCE
- M MEASURED DISTANCE
- SET REBAR
- ▲ SET POINT ON LINE
- SET COTTON SPINDLE



#123 USA BOULEVARD (40' W)

SHEET 1 OF 2



PO BOX 278
COTTLEVILLE, MO 63338
PHONE: 636.922.1001
Corp # 2005000229
www.CardinalSurveying.com

JOB # 1402014
FB 268:41
FIELD WORK BY: CML/WDR
DRAWN BY: JLK/AEC
REVIEWED BY:
WILLIAM JACOB CLARK
LS# 2002014101

This is to certify that on Jan 27th, 2014 a request by a Great Title Company was made for a Boundary Survey and to locate the improvements on the above named tract and that the results are, to the best of my knowledge, correctly represented on this drawing.

